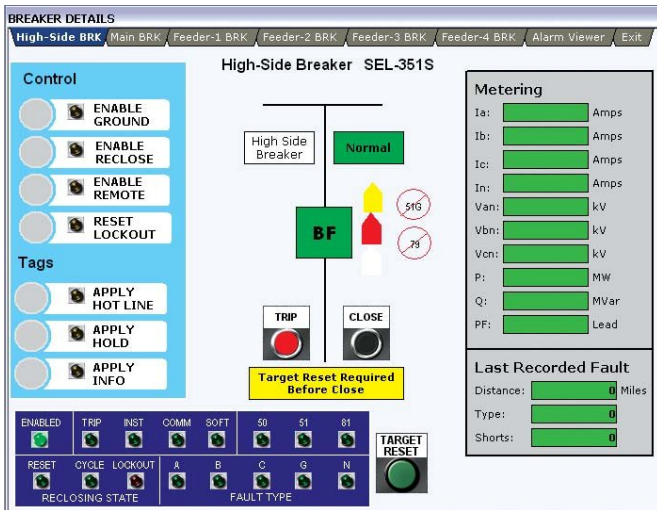




# ClearView-HMI, A SCADA System so advanced, it's simple...

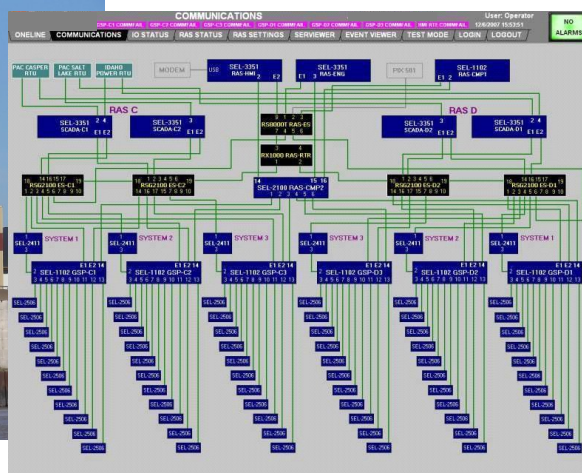


- ⇒ Designed for the non-programmer
- ⇒ Highly Reliable
- ⇒ Fully Interoperable  
Software and hardware Agnostic
- ⇒ Scalable  
HMI to Enterprise
- ⇒ Low cost-of-ownership
- ⇒ Fast return-on-investment

ClearView-HMI is uniquely suited to convert and filter continuous streams of cryptic data into immediately understandable and useful information such as: alarms, reports/trends, and visual process representation. These allow you to make quick top-quality supervisory decisions for your production processes or business units



You no longer have to decide between HMI or SCADA because ClearView-HMI is fully scalable: it can cost-effectively control and monitor just a few devices or it can connect to hundreds of nodes at multiple sites on an information highway.



Industry managers and their automation engineers globally choose ClearView-HMI because of its value in managing their systems, its ease-of-use, and its cost effectiveness. There is nothing like it on the market today.

ClearView-SCADA  
 Unlimited tags—Unlimited functionality!



No other HMI/SCADA system on the market today offers all these features:

### Functionality

- ⇒ Full suite of features
- ⇒ Applications can be modified without taking the server or client off line
- ⇒ Run-Time Project Modification includes adding/deleting tags and alarms, modifying/adding screens, modifying scripts, and much, much more
- ⇒ Full ODBC Compliance
- ⇒ Full ActiveX Compliance
- ⇒ Standard Scripting Language (Client), Server Scripting, Wizard Scripting
- ⇒ Standard Reporting Tools (Reports & Trends)
- ⇒ OPC Server Communications — connectivity to multiple vendors
- ⇒ Unlimited tags and alarms
- ⇒ Fully Interoperable
- ⇒ Clients are both developmental and run time
- ⇒ 10,000 tags per second capability

### Scalability & Client/Server Topology

- ⇒ HMI to Enterprise
- ⇒ Open system topology
- ⇒ Client-Server architecture
- ⇒ Update existing systems without protocol conversion using ClearView with ReLab Software's Software Logic Controller

### Reliability

- ⇒ ClearView Server provides fully redundant operations with automatic fail-over simply by checking a box on the configuration page.
- ⇒ ReLab applications can reside anywhere on the network (i.e., the server could be on one machine, the OPC server on another, the historian database on another, the client on another, etc.) the total system has superior reliability.

### Security

- ⇒ ClearView-HMI goes beyond the basic Microsoft Win2K/XP2 security methods with an unlimited number of security levels, right down to individual screen objects. This provides a certified audit trail to record any significant changes to the system.
- ⇒ ClearView-HMI is fully compliant with the requirements of 21CFR Part 11 for remote operation and electronic signature.

### Economics

- ⇒ Low cost-of-ownership with fast return-on-investment
- ⇒ ClearView-HMI system (1 client and 1 server) best price/performance.
- ⇒ No additional licensing fees for a development application

Download a demo version from our web site at [www.relabsoft.com](http://www.relabsoft.com)

ReLab Software LLC. [www.relabsoft.com](http://www.relabsoft.com) [www.clearcontrols.com](http://www.clearcontrols.com)  
contact@relabsoft.com (925) 262-4244

ClearView-SCADA

Unlimited tags—Unlimited functionality!