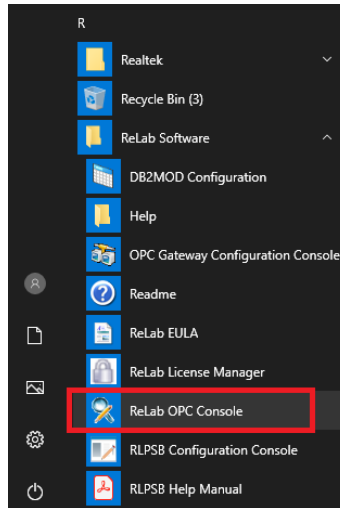
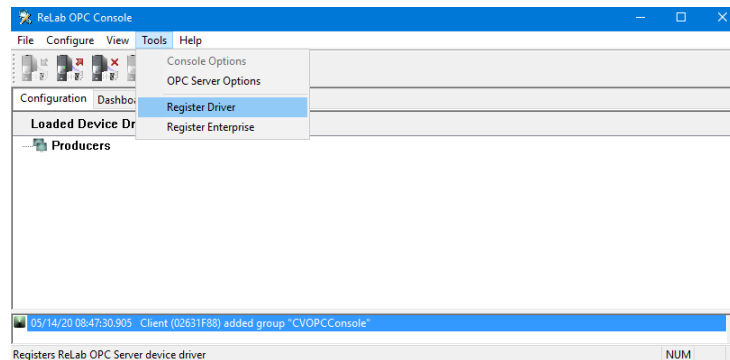


IEC-61850 Synchrophasor Device Driver License Registration

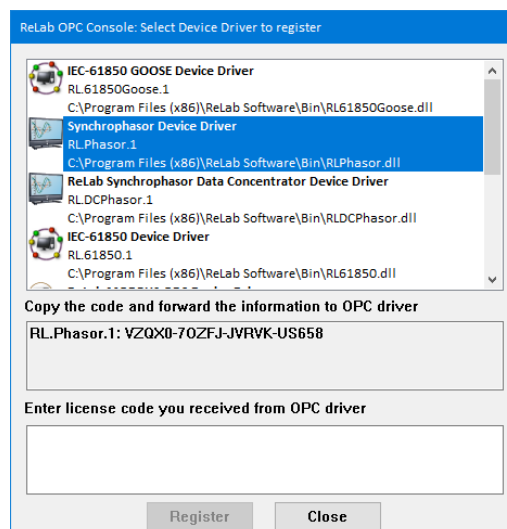
1. Install the software
2. Open ReLab OPC Console



3. Navigate to Tools | Register Driver



4. Click on **Register Driver** menu item
5. Select **Synchrophasor Device Driver**

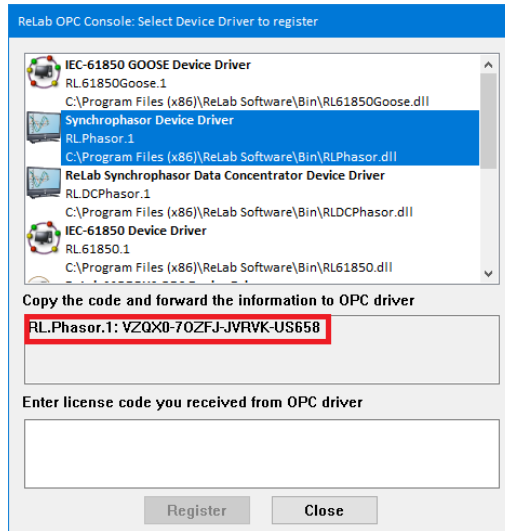




IEC-61850 Synchrophasor Device Driver License Registration

6. Copy/Paste customer email to sales@relabsoft.com

ID and



7. You will get (email) License Code which you would need to enter into text box below and click on **Register** button