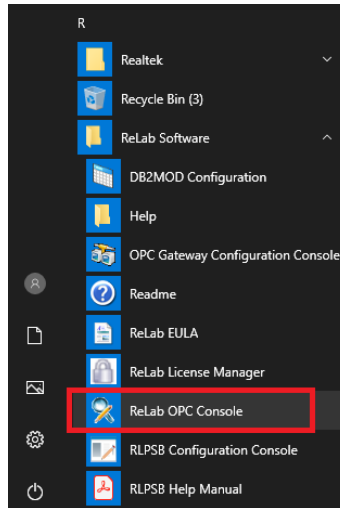
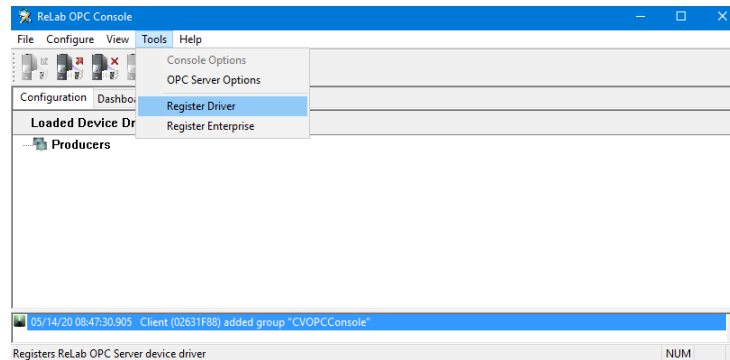


# IEC 60870-5-101 OPC Device Driver License Registration

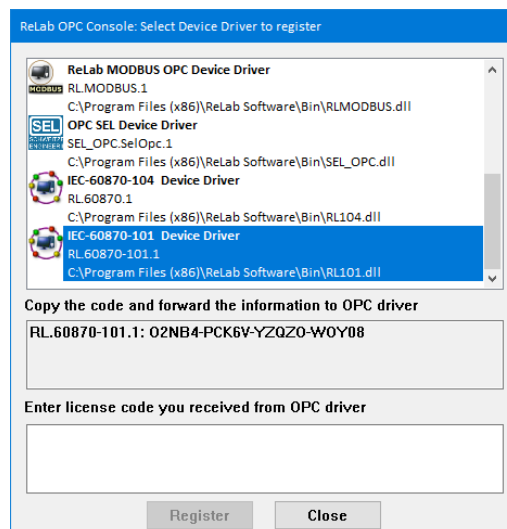
1. Install the software
2. Open ReLab OPC Console



3. Navigate to Tools | Register Driver

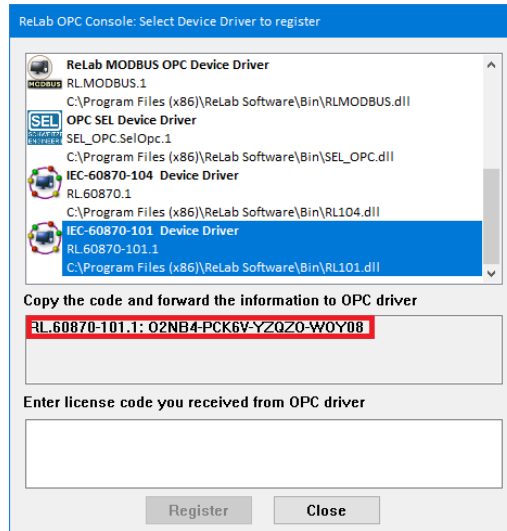


4. Click on **Register Driver** menu item
5. Select **IEC 60870-5-101 OPC Device Driver**



# IEC 60870-5-101 OPC Device Driver License Registration

6. Copy/Paste customer ID and email to [sales@relabsoft.com](mailto:sales@relabsoft.com)



7. You will get (email) License Code which you would need to enter into text box below and click on **Register** button