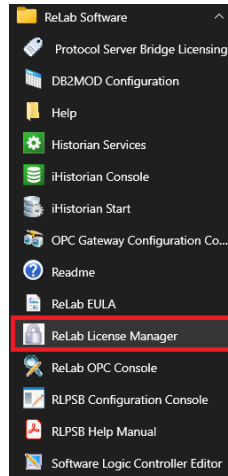
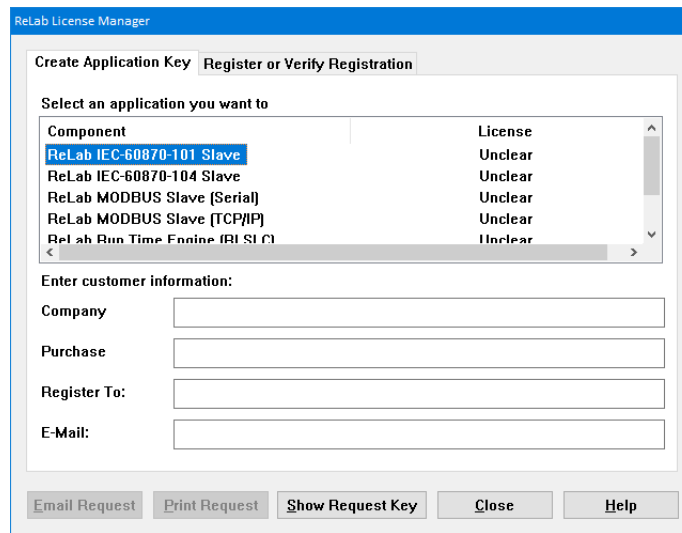


IEC 60870-5-101 Slave License Registration

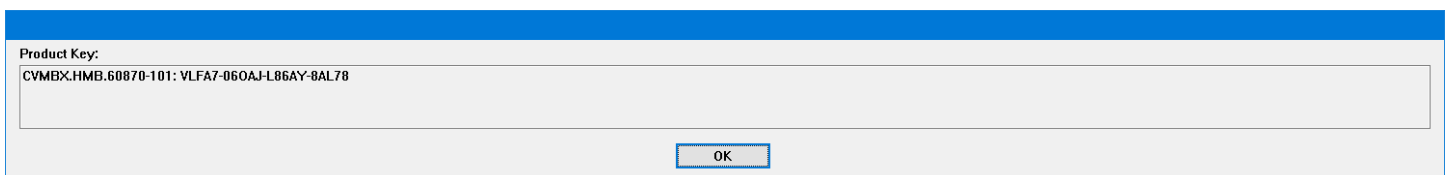
1. Install the software
2. Open **License Manager**



3. On **Create Application Key** tab select **IEC 60870-5-101 Slave**

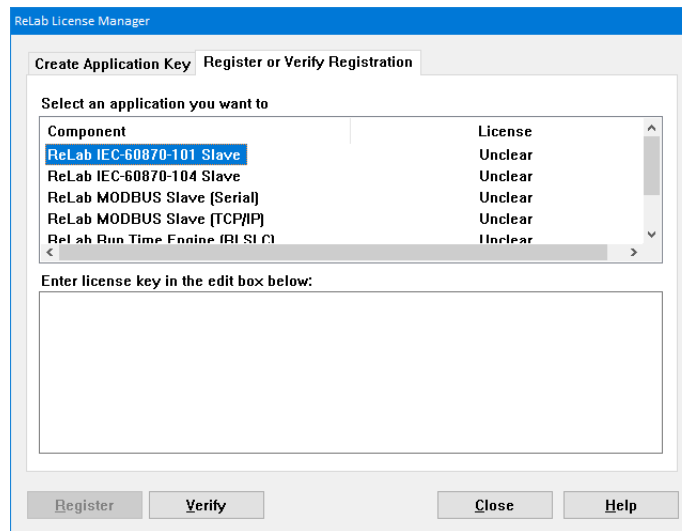


4. Click on **Show Requested Key** button

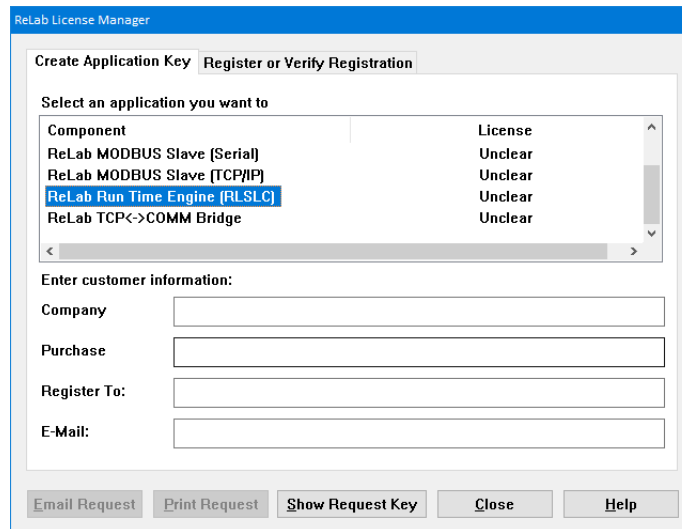


5. Copy/Paste customer **Product Key** and email to sales@relabsoft.com
6. You will get (email) License Key
7. Change the tab to **Register or Verify Registration**
8. Enter **License Key** into the textbox below and click on **Register** button

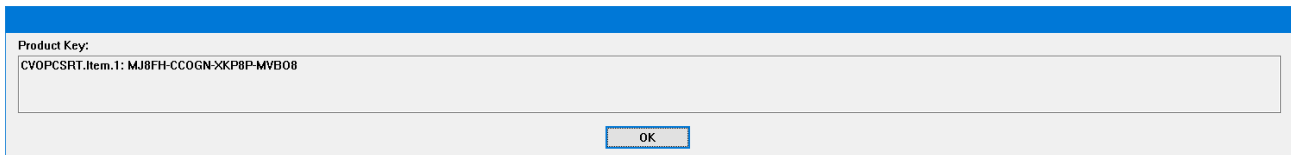
IEC 60870-5-101 Slave License Registration



9. On **Create Application Key** tab select **Run Time Engine (RLSLC)**



10. Click on **Show Requested Key** button



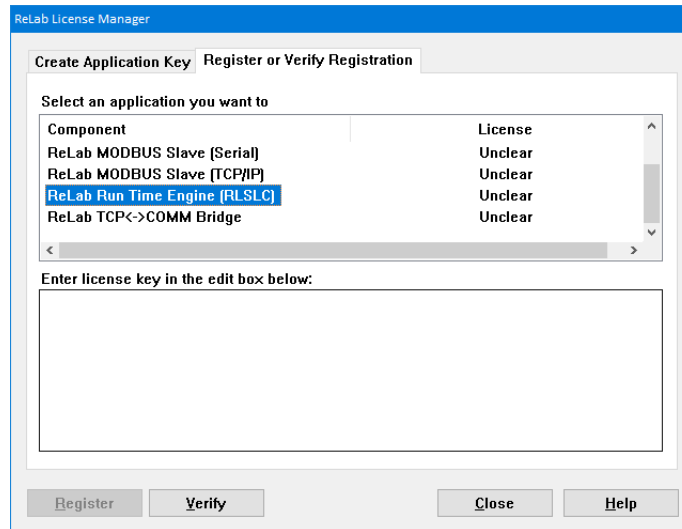
11. Copy/Paste customer **Product Key** and email to sales@relabsoft.com

12. You will get (email) License Key

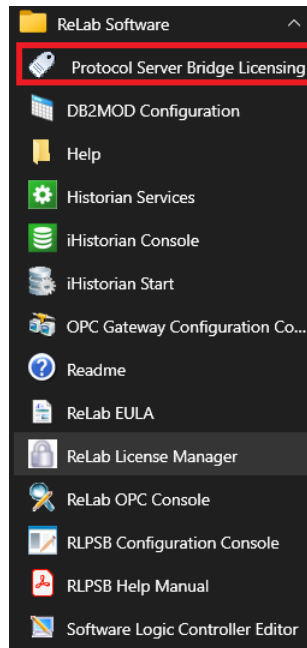
13. Change the tab to **Register or Verify Registration**

14. Enter **License Key** into the textbox below and click on **Register** button

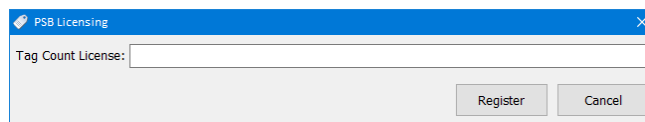
IEC 60870-5-101 Slave License Registration



15. Open Protocol Server Bridge Licensing



16. Enter a license and click on **Register** button



IEC 60870-5-101 Slave License Registration

Verifying the License

1. On opening ReLab License Manager in column **License** you will see status Unclear
2. In order to verify the license, select required application and click the button **Verify**

