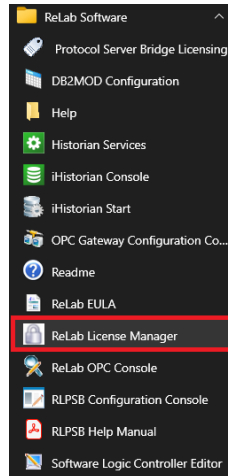
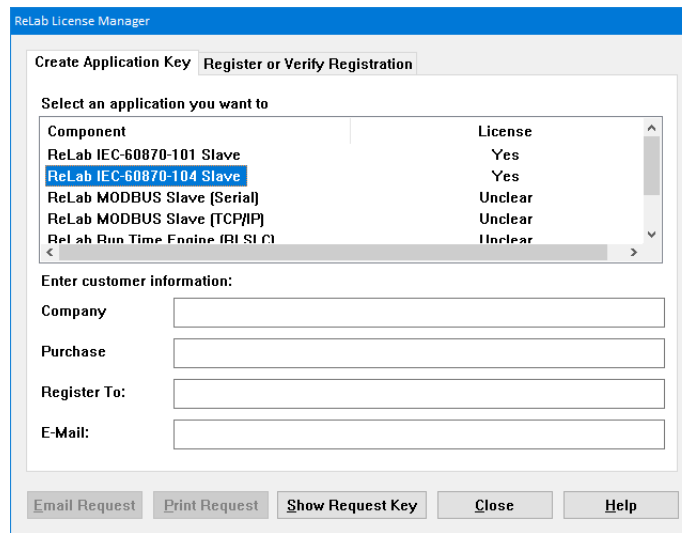


# IEC 60870-5-104 Slave License Registration

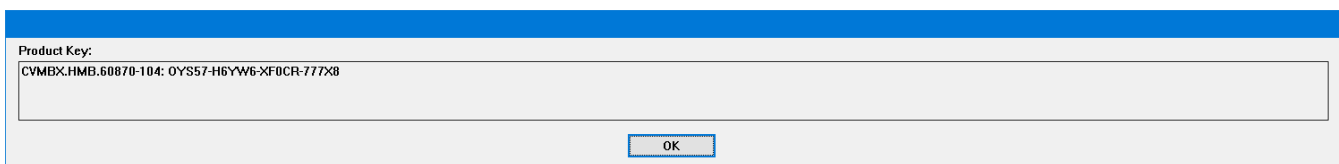
1. Install the software
2. Open **License Manager**



3. On **Create Application Key** tab select **IEC 60870-5-104 Slave**

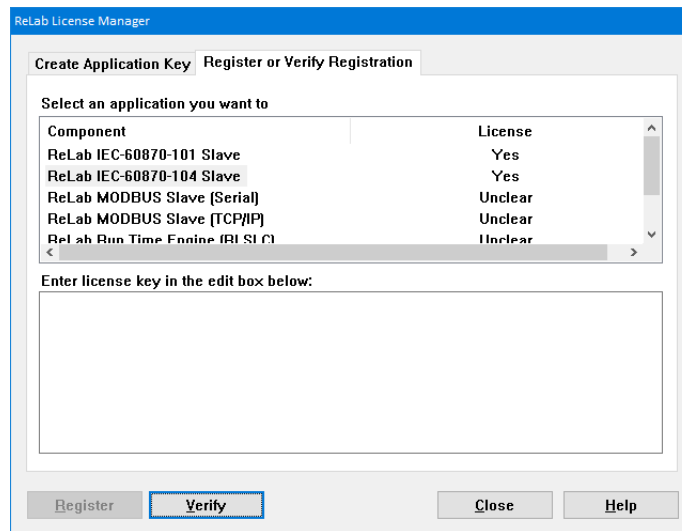


4. Click on **Show Requested Key** button



5. Copy/Paste customer **Product Key** and email to [sales@relabsoft.com](mailto:sales@relabsoft.com)
6. You will get (email) License Key
7. Change the tab to **Register or Verify Registration**
8. Enter **License Key** into the textbox below and click on **Register** button

# IEC 60870-5-104 Slave License Registration

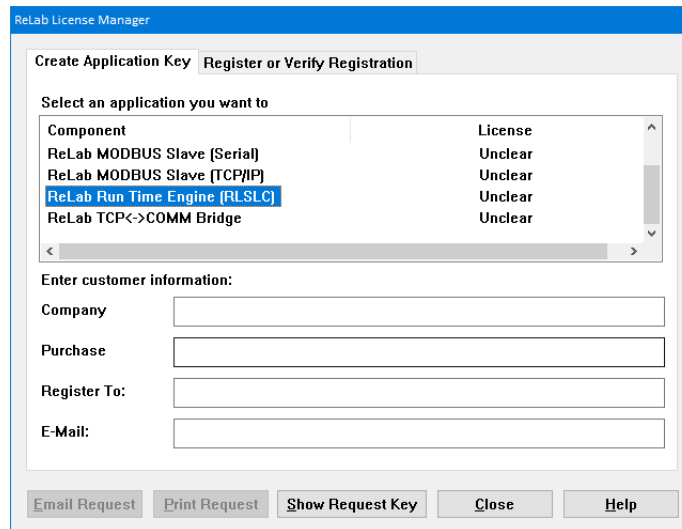


Component	License
ReLab IEC-60870-101 Slave	Yes
ReLab IEC-60870-104 Slave	Yes
ReLab MODBUS Slave (Serial)	Unclear
ReLab MODBUS Slave (TCP/IP)	Unclear
ReLab Run Time Engine (RSLC)	Unclear

Enter license key in the edit box below:

Register   **Verify**   Close   Help

9. On **Create Application Key** tab select **Run Time Engine (RSLC)**



Component	License
ReLab MODBUS Slave (Serial)	Unclear
ReLab MODBUS Slave (TCP/IP)	Unclear
<b>ReLab Run Time Engine (RSLC)</b>	Unclear
ReLab TCP<->COMM Bridge	Unclear

Enter customer information:

Company:

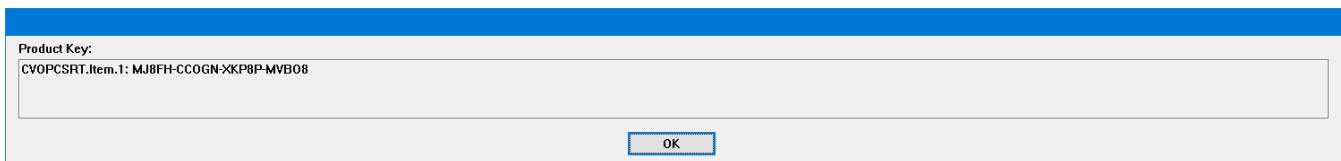
Purchase:

Register To:

E-Mail:

Email Request   Print Request   **Show Request Key**   Close   Help

10. Click on **Show Requested Key** button



Product Key:  
CVOPCSRT.Item.1: MJ8FH-CCOGN-XKP8P-MVB08

OK

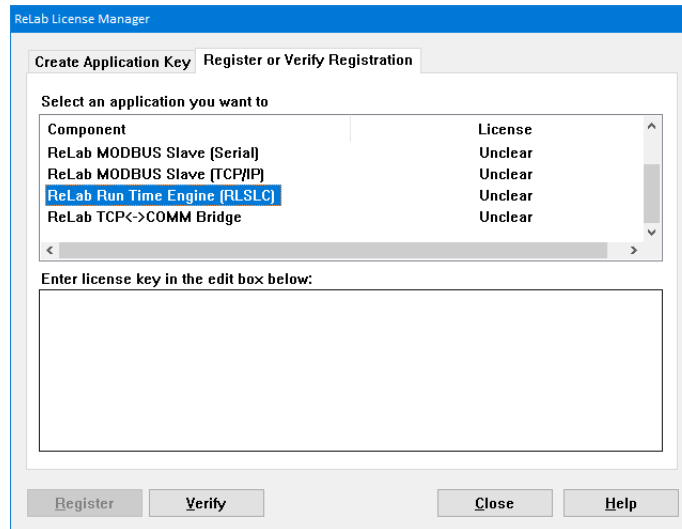
11. Copy/Paste customer **Product Key** and email to [sales@relabsoft.com](mailto:sales@relabsoft.com)

12. You will get (email) License Key

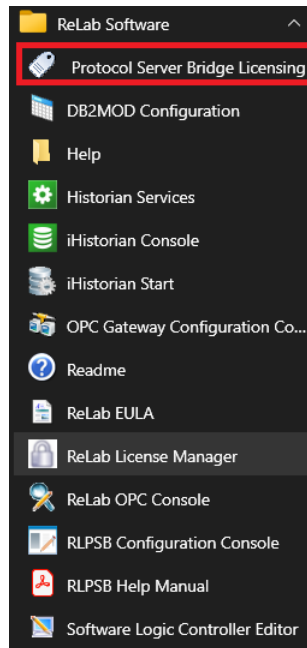
13. Change the tab to **Register or Verify Registration**

14. Enter **License Key** into the textbox below and click on **Register** button

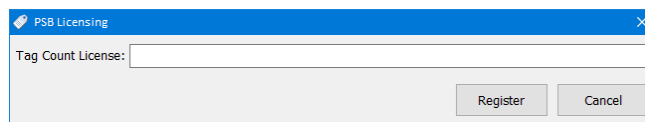
# IEC 60870-5-104 Slave License Registration



15. Open Protocol Server Bridge Licensing



16. Enter a license and click on **Register** button



# IEC 60870-5-104 Slave License Registration

## Verifying the License

1. On opening ReLab License Manager in column **License** you will see status Unclear
2. In order to verify the license, select required application and click the button **Verify**

