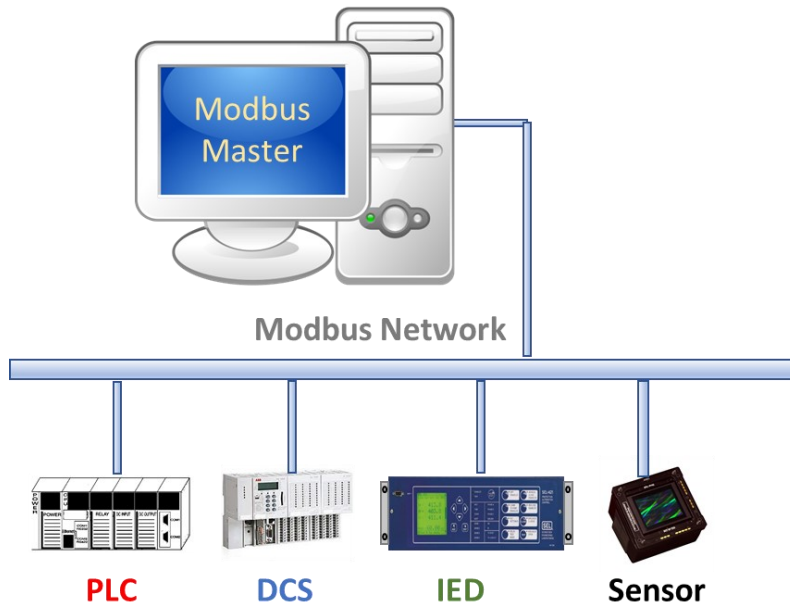
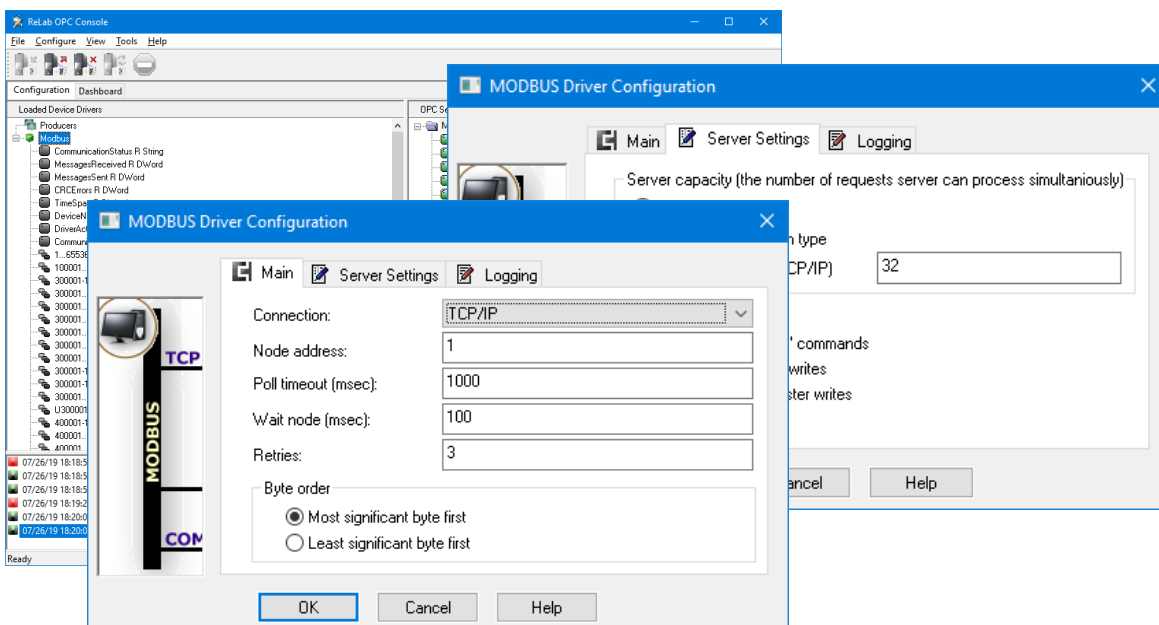


Modbus Device driver utilizes a reliable, fast and secure Modbus protocol with ability of RTU (RS-232 and RS-422, RS-485) and TCP/IP communications between Modbus devices (slaves) and Modbus OPC Master.



- ⇒ *Simple to use*
- ⇒ *Rapid Configuration (can be configured in minutes)*
- ⇒ *Scalable—connect to a single device or run the entire plant on a single PC*





Robust • Simple • Scalable

Scalable

- ⇒ Covers the entire Modbus networks (serial and TCP/IP)
- ⇒ Supports the entire Modbus memory map

Performance

- ⇒ Modbus OPC Device Driver has extremely high performance. With thousands of tags it will barely consume 10% of your computer's CPU resources

Reliability

- ⇒ Modbus OPC Device Driver has a proven record of running for years without interruptions, crashes, memory growth or other unpleasant effects. It will provide you with a continuous stream of data you can rely on

Communication

- ⇒ RTU Serial (RE-232, RS-422 and RS-485) & TCP/IP support
- ⇒ Supports up to 100 serial connections
- ⇒ Virtually unlimited number of TCP/IP connections

Functionality

- ⇒ Serial Multi Node connections to single COM port
- ⇒ Changing register read to most and least significant
- ⇒ CRC functionality
- ⇒ Enable or disable allow gaps in read commands
- ⇒ Enable or disable single register or coil writes

Economics

- ⇒ Having all those features plus unlimited tags, you can not make a mistake by choosing Modbus OPC Device Driver

You can download a free demo version from our web site at www.relabsoft.com

Modbus Device Driver
A robust & scalable solution