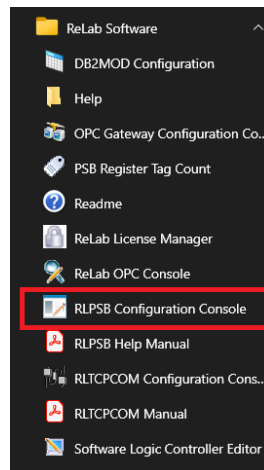
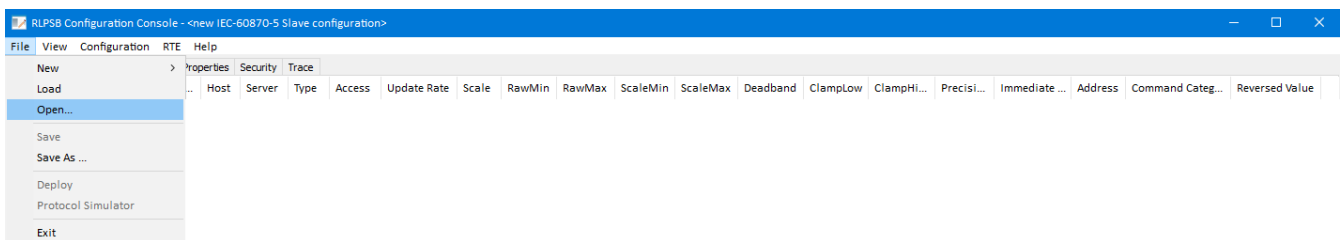


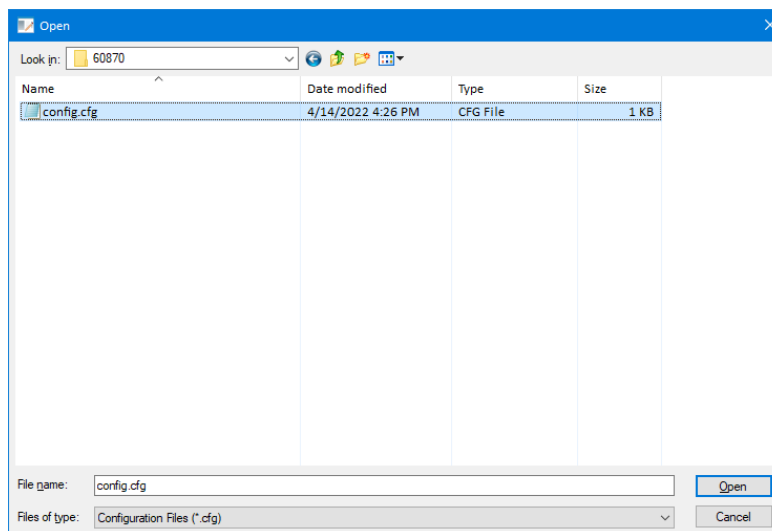
1. Install **OPC Product Suite** software on the new PC
2. Install, copy and configure old OPC project (ref: OPC Project transferring manual)
3. Install **Protocol Server Bridge** software on the new PC
4. Copy existing **Protocol Server Bridge** project to a new PC (.cfg, .csv and .vbs files)
5. Open **RLPSB Configuration Console**



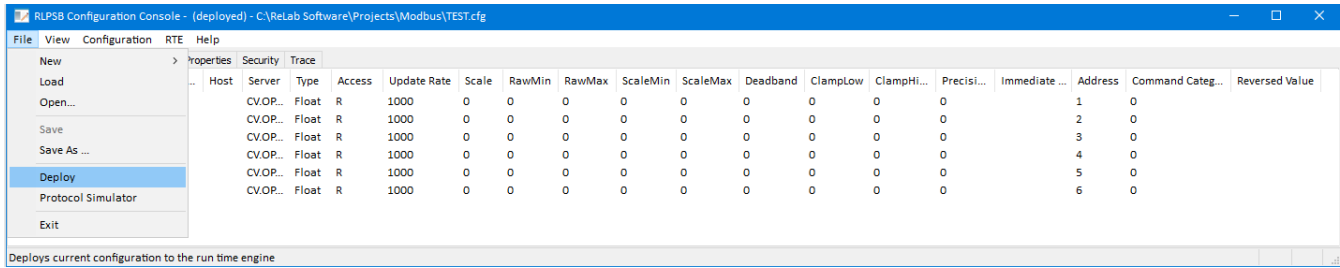
6. Navigate to **File | Open** menu item



7. Open previously saved **Protocol Server Bridge** project

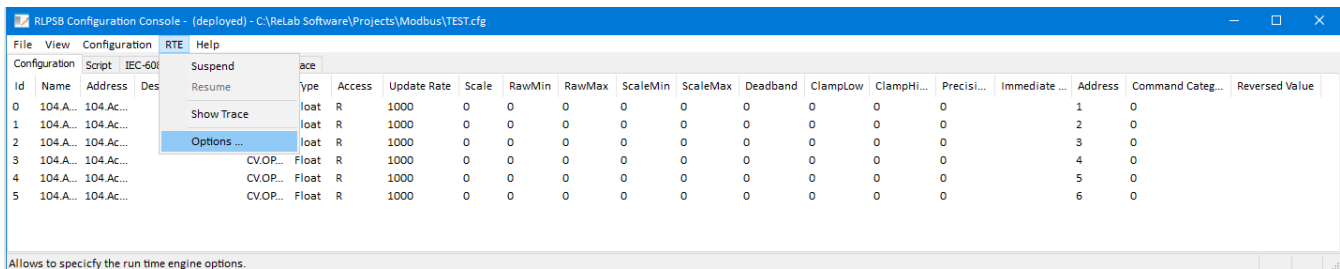


8. Navigate to **File | Deploy** menu (click on **Deploy** menu item)



9. Double check if your **Protocol Server Bridge** is starting as service or as application

10. Select from menu **RTE | Options**



11. Double check if your old project was starting as NT Server or as Application

- If old project was starting as NT Service check the checkbox **Start Run Time Engine as NT service** and click on **OK** button
- If old application was starting as Application click on **Cancel** button

